

8 7 6 5 4 3 2 1

D

C

B

A

D

C

B

A

10-32 THREADED HOLE
THIS END ONLY

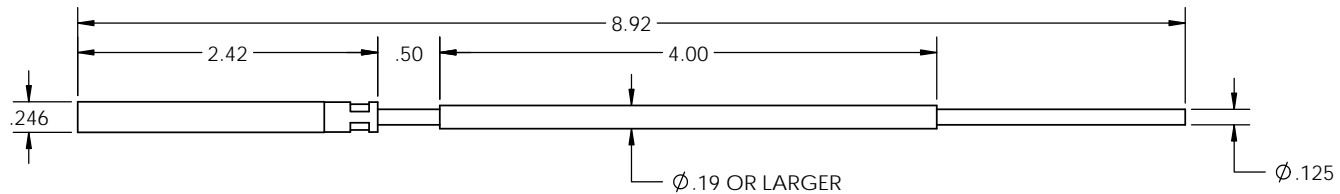
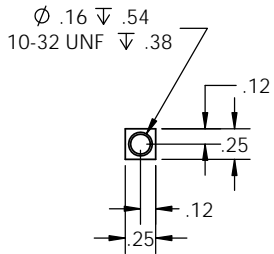
UNDERSIZED KEYSTOCK TO FIT BUSHING

CRIMP AFTER WIRE ROPE
HAS BEEN INSERTED

WIRE ROPE

STIFFENING SLEEVE

ENDS OF SLEEVE
SLIGHTLY CRIMPED



COAST CONTROLS, INC.

7500 COMMERCE CT.
SARASOTA, FL.34243
www.CoastControls.com

941.355.7555 - 941.359.2321

	NAME	DATE
DRAWN	kek	10/24/2017
CHECKED		
ENG APPR.		
MFG APPR.		
Q.A.		

TITLE:
DCR 1000
MARK ANDY 800
WIRE ROPE AND HOUSING
ASSEMBLY

DRAWINGS FOR APPROVAL NEED TO BE SIGNED, DATED AND RETURNED TO
COAST CONTROLS, INC. BEFORE ANY MANUFACTURING CAN BEGIN.

APPROVED SIGNATURE X _____ DATE _____

PROPRIETARY AND CONFIDENTIAL
THE INFORMATION CONTAINED IN THIS
DRAWING IS THE SOLE PROPERTY OF
COAST CONTROLS, INC. ANY
REPRODUCTION IN PART OR AS A WHOLE
WITHOUT THE WRITTEN PERMISSION OF
COAST CONTROLS, INC. IS
PROHIBITED.

UNSPECIFIED TOLERANCES			
FRACTIONS ± 1/32		ANGLES ± 1 DEG	
INCH	.X ±.030	.XX ±.015	.XXX ±.005
MM	.X ±1.0	.XX ±.50	.XXX ±.25

DO NOT SCALE DRAWING

PAGE: **3-2998**
QUOTE: **QXXXX-XX**

SIZE	DWG. NO.	REV
B	MA CABLE AND HOLDER ASSEMBLY	

SCALE: 1:1 WEIGHT: SHEET 1 OF 1

8 7 6 5 4 3 2 1