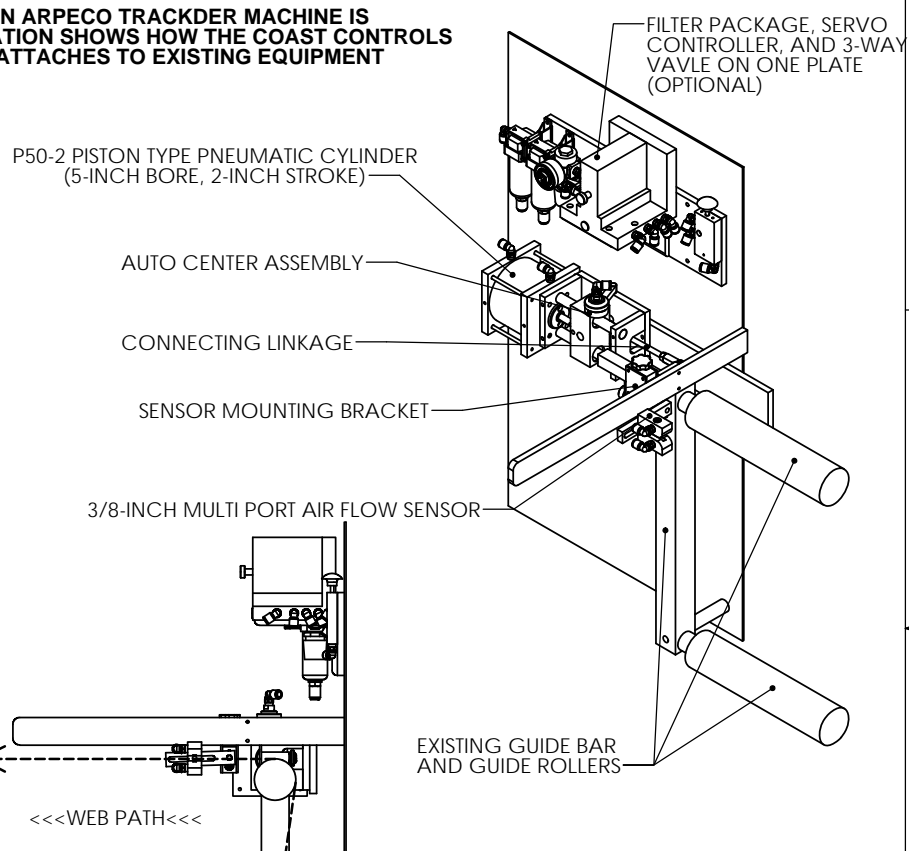
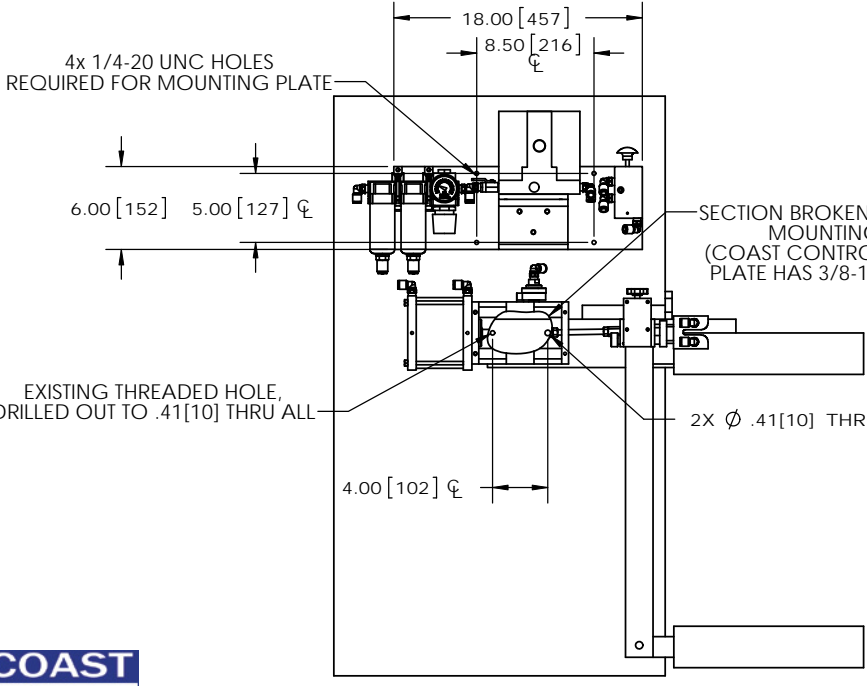
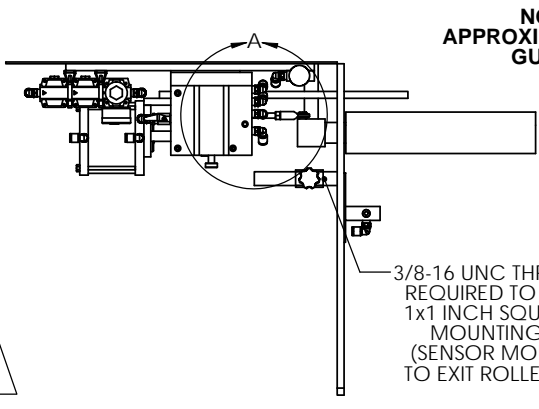
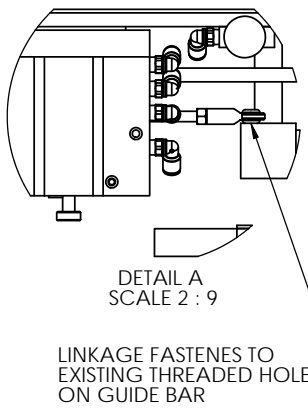


NOTE: THE SHOWN ARPECO TRACKER MACHINE IS APPROXIMATE ILLUSTRATION SHOWS HOW THE COAST CONTROLS GUIDING SYSTEM ATTACHES TO EXISTING EQUIPMENT



DRAWINGS FOR APPROVAL NEED TO BE SIGNED, DATED AND RETURNED TO COAST CONTROLS, INC. BEFORE ANY MANUFACTURING CAN BEGIN.

APPROVED SIGNATURE _____ DATE _____

PROPRIETARY AND CONFIDENTIAL
THE INFORMATION CONTAINED IN THIS DRAWING IS THE SOLE PROPERTY OF COAST CONTROLS, INC. ANY REPRODUCTION IN PART OR AS A WHOLE WITHOUT THE WRITTEN PERMISSION OF COAST CONTROLS, INC. IS PROHIBITED.

PROJECTION IS THIRD ANGLE

UNSPECIFIED TOLERANCES			
FRACTIONS	1/32	ANGLES	± 1 DEG
INCH	.X ±.030	.XX ±.015	.XXX ±.005 .XXXX ±.0005
MM	.X ±1.0	.XX ±.50	.XXX ±.25

DO NOT SCALE DRAWING

	NAME	DATE
DRAWN	KEK	8/17/2010
CHECKED		
ENG APPR.		
MFG APPR.		
Q.A.		

PAGE: **3-1626**
QUOTE: **QXXX-XX**

COAST CONTROLS, INC.
7500 COMMERCE CT.
SARASOTA, FL34243
941.355.7555 - 941.359.2321

TITLE: **COAST CONTROLS RETROFIT PACKAGE FOR ARPECO TRACKER SYSTEMS**

SIZE **B** DWG. NO. Arpeco Tracker Retrofit Assy REV

SCALE: 1:9 WEIGHT: SHEET 1 OF 1